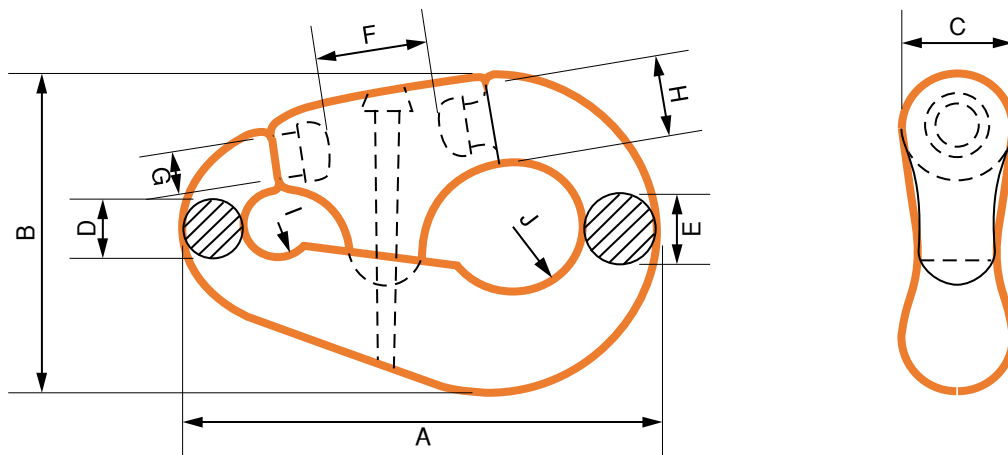




Pear Shackle – Ship Chain



Number	A	B	C	D	E	F	G	H	I
2	199	136	39	26	33	58	26	39	17
3	245	172	47	31	40	66	37	45	19
4	302	206	63	41	49	83	42	58	26
5	381	263	77	52	68	100	58	74	32
6	462	315	94	62	81	113	64	90	38
7	568	379	121	81	97	153	84	116	48
8	658	422	139	96	135	155	112	135	54
9	700	440	148	98	130	159	124	148	57
10	900	580	194	122	168	194	130	181	73

Number	Chain \varnothing	Proof Load Grade 3	Break Load Grade 3	Proof Load Grade R4	Break Load Grade R4	Weight
2	19-24	34000	48500	-	-	30
3	25-30	53000	75700	-	-	35
4	32-40	91367	130524	143882	182427	43
5	42-51	145513	207512	228722	290211	52
6	52-60	197825	282461	310911	394324	65
7	62-79	329674	469987	518016	657105	76
8	81-92	434399	619987	683108	866555	79
9	94-95	459892	656697	723590	917948	89
10	97-102	522095	746432	821381	1041844	108

Weight unit is Kilograms. All measurements in mm. Measurements, weights, and drawings, are based on industry standards. Deviation margins need to be taken in mind, this is your own responsibility and not from Castle Hills AS.